

## 油(液)壓架車機

Hydraulic Portable High Tonnage Jack



# Quality Dev

## 『創新・品質・服務』

### 巨輪興的承諾與堅持

1978年，本公司以巨輪企業行之商號創立於高雄縣橋頭鄉，主要營運項目為油壓千斤頂及各類油壓手工具的開發、生產、銷售及維修服務。創業以來，始終堅持以『研發為基石、品質即命脈、服務為根本』的理念，提供客戶性能優異的產品及完善的專業服務，20餘年來深獲國內外業界的肯定與信任。

為落實企業永續經營的願景，公司在全體同仁長期努力與客戶的熱情支持下，終於在2000年新世紀來臨之際，完成新廠落成遷入啓用及擴大公司組織，同時以全新的企業體制—巨輪興有限公司，持續為滿足客戶需求而努力。

本著創業初衷之熱忱和經歷千錘百鍊的豐富經驗，在不斷改善製造流程，嚴格監控每一生產環節中，巨輪興有限公司將以國際品質的實力，伴隨客戶共創未來。

In 1978, our company was established with the name – Chu Lun Co. in Chiao Tou Hsiang. The scope of supply is inclusive of the R&D, manufacturing, sales business and after-service of the hydraulic jacks and the versatile hydraulic hand tools. Sticking to the philosophy of “R&D as foundation, quality as lifeline and service as basis”, we provides the clients with the most outstanding products and comprehensive after-service system. Over 20 years effort and development, we have gained the trust and credibility from domestic and international industries.

To reach the vision of long-term operation goal, we have setup a newly expansion plant and enlarged the organization structure under the staff's hard work and the clients' strong support in the threshold of year 2000. The overall revolutionized operation under the new brand name – CHU LUN SING CO. LTD. We will do everything satisfy to our customers continuously.

Chu Lun Sing's ultimate goal is to invite our clients together to create the new future and to present the internationalized recognized products by his tenacity, abundant experiences, continuing improvements on manufacturing progress and stringent quality control system.



# Service Development





巨輪興對於所做的每個環節都給予品質上的承諾：從原料的購入乃至客戶的售後服務，並且通過ISO9001:2015國際認證。

ISO9001:2015要求承諾管理、執行、產品研發、生產及持續改進的一系列標準化，此認證標章即證明巨輪興已執行並維持記錄自工廠至客戶，包含檢測、處理、訓練等所有文件。

ISO9001要求定期內部和外部稽核以確認所有足以影響品質控制的因素得以監控，這些都是無論過去或未來我們對客戶的保證。

**SUN RUN's** promise to quality is evident in everything we do, from raw material receipt to how we support our customers years after they purchase our goods.

We are registered to ISO 9001:2015 international quality standard. ISO 9001:2015 requires compliance with standards for management, administration, product development, manufacturing and continual improvement.

Our registration verifies that SUN RUN has adopted and maintains documentation for processes ranging from factory to customers, inspection, handling, and training. ISO 9001 also requires periodic internal and external audits to ensure all aspects of work affecting quality control are monitored. This always has been, and will continue to be. That's our guarantee to you.

巨輪興油壓缸符合美國機械工程協會(American Society of Mechanical Engineers) ASME B30.1標準

1. 於典型材料降服強度下，油壓缸有至少2:1的安全係數及
2. 油壓缸設計為均可符合其動態測試、靜態測試及額定荷載功能測試。

**SUN RUN** hydraulic cylinder comply with the criteria set forth in the American Society of Mechanical Engineers standard institute ASME B30.1:

1. Cylinders are designed to have minimum of a 2-to-1 safety factor on typical material yield strength; and/or
2. Cylinder is designed to comply with its dynamic test, static test and rated load function test.

[illegible]



## SPL/A Series



Capacity per Lifting point:

**50-200 ton**

Max. Stroke:

**334 mm**

Maximum Operating Pressure:

**700 bar**

## SPL/A 推式架車機

- 可調整且合人體工學把手
- 傾斜手柄後即可鎖緊/鬆開，不需離開操作位置工作

### Portable High Tonnage Jacks

- ※ Adjustable, ergonomic handle.
- ※ Handle tilts to start the job and is easily locked/ unlocked without moving from operating position.



**SPLA-5013B B型-框架推車型**  
B-Frame trolley



20呎遙控器  
20 ft remote control.

型號選擇 Custom build your tool:

**SPLA-100136**

1 2 3

#### 1. 動力來源

A=氣動泵浦  
E=電動泵浦

#### 1.Power

A=Air pump  
E=Electric Pump

#### 2. 油缸噸數-揚程

5013=RSR-5013  
10013=RSR-10013  
15013=RSR-15013

#### 2.Cyl. Cap. & stroke

5013=RSR-5013  
10013=RSR-10013  
15013=RSR-15013

#### 3. 車台樣式

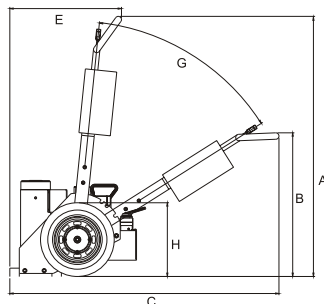
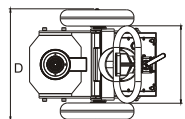
無字=圓桶型  
B=框架型

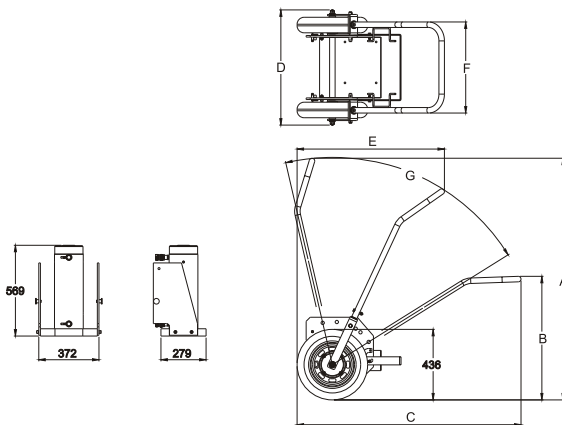
#### 3.Trolley

No word=Pail trolley  
B=Frame trolley



**SPLA-RSR5013 無字-圓桶型**  
No word-Pail trolley





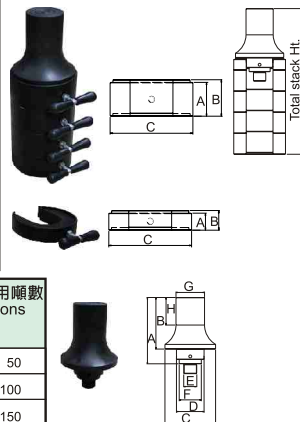
型號 Model No.	油缸型號 Cylinder	驅動單元 Power Unit	推車樣式 Trolley Type	閥樣式 Valve	外型尺寸 Dimensions (mm)						
					A	B	C	D	E	F	G
SPLE-5013	RSR-5013	SPE-554TQJ 1-1/8hp 230V 10.7A 50/60Hz Single Phase Max. Press 700 bar	無字-露桶型 -Pail trolley	手動 四口三位 方向閥 Manual 4W3P valve	1538	850	1592	659	660	458	52
SPLE-5013B	Cap.: 498kN Stroke:334mm		B型-框架型 B-Frame trolley								
SPLE-10013	RSR-10013		無字-露桶型 -Pail trolley								
SPLE-10013B	Cap.: 933kN Stroke:333mm		B型-框架型 B-Frame trolley								
SPLE-15013	RSR-15013		無字-露桶型 -Pail trolley								
SPLE-15013B	Cap.: 1386kN Stroke:333mm		B型-框架型 B-Frame trolley								
SPLA-5013	RSR-5013	SPA-554TQJ 4hp Air press 3~8 bar Max. Press 700 bar	無字-露桶型 -Pail trolley		1494	764	1384	712	911	583	71
SPLA-5013B	Cap.: 498kN Stroke:334mm		B型-框架型 B-Frame trolley								
SPLA-10013	RSR-10013		無字-露桶型 -Pail trolley								
SPLA-10013B	Cap.: 933kN Stroke:333mm		B型-框架型 B-Frame trolley								
SPLA-15013	RSR-15013		無字-露桶型 -Pail trolley								
SPLA-15013B	Cap.: 1386kN Stroke:333mm		B型-框架型 B-Frame trolley								

## 選配墊塊組

Optional Blocks and Extension

層疊墊塊型號 Cribbing Blocks Model No.	外型尺寸 Dimensions (mm)			適用噸數 tons	突形墊塊 Jack Module Ext.	整組總高 Total stack Ht.	重量 Wt.(kg)
	A	B	C				
XKSPLE5013-A01	38.5	44.5	139.7	50	173.0	515.9	16.3
XKSPLE5013-A02	76.5	82.5	139.7				
XKSPLE10013-A01	38.5	44.5	187.3	100	177.8	527.4	30.9
XKSPLE10013-A02	76.5	82.5	187.3				
XKSPLE15013-A01	38.5	44.5	222.2	150	168.3	511.2	38.6
XKSPLE15013-A02	76.5	82.5	222.2				
XKSPLE20013-A01	38.5	44.5	254.2	200	168.3	511.2	38.6
XKSPLE20013-A02	76.5	82.5	254.2				

突形墊塊型號 Jack Module Ext. Model No.	外型尺寸 Dimensions (mm)								重量 Wt. (kg)	適用噸數 tons
	A	B	C	D	E	F	G	H		
XKSPLE5013-A03	223.8	173	127	72.5	1"-8UN	79.5	66.8	92.2	9.5	50
XKSPLE10013-A03	228.6	177.8	174.6	95.2	1-3/4"-12UN	76.2	98.4	95.0	18.2	100
XKSPLE15013-A03	219.2	168.4	203.2	114.3	3-3/8"-16UN	—	114.3	88.9	22.7	150



## SPLER/AR Series



Capacity per Lifting point:  
**100 ton**

Max. Stroke:  
**356-686 mm**

Maximum Operating Pressure:  
**700 bar**

## SPLER/AR 推式架車機

- 可調整且合人體工學把手
- 傾斜手柄後即可鎖緊/鬆開，不需離開操作位置工作
- 適用於鐵路環境作業

### Portable High Tonnage Jacks

- ※Adjustable, ergonomic handle.
- ※Handle tilts to start the job and is easily locked/ unlocked without moving from operating position.
- ※Railroad Edition.



型號 Model No.	油缸樣式 Cyl. Type	油缸能力 Cyl. Cap. ton (kN)	揚程 Stroke (mm)	回縮高度 Ret. Ht. (mm)	適用泵浦 Pump	低壓流量 L.P Flow (L/min)	高壓流量 H.P Flow (L/min)	油箱容量 Oil tank (L)	閥樣式 Valve
SPLER-10014	雙動型油缸 Double-Acting	100 (1000)	356	610	Electric	7.2	0.95	8	手動 四口三位 方向閥 Manual 4W3P valve
SPLER-10027			686	940	Electric	7.2	0.95		
SPLAR-10014			356	610	Air	5.4	0.49		
SPLAR-10027			686	940	Air	5.4	0.49		
SPLER-10014C 1)			356	610	Electric	7.2	0.95		
SPLER-10027C 1)			686	940	Electric	7.2	0.95		
SPLAR-10014C 1)			356	610	Air	5.4	0.49		
SPLAR-10027C 1)			686	940	Air	5.4	0.49		
SPLER-10014XK 2)			356	610	Electric	7.2	0.95		
SPLER-10027XK 3)			686	940	Electric	7.2	0.95		
SPLAR-10014XK 2)			356	610	Air	5.4	0.49		
SPLAR-10027XK 3)			686	940	Air	5.4	0.49		

1): C 型包套 XKSPLE100 層疊墊塊組  
2): -10014XK 型包套 XKSPLE10014 延長墊塊組  
3): -10027XK 型包套 XKSPLE10027 延長墊塊組

1): C models include XKSPLE100 crib set,  
2): -10014XK Model include XKSPLE10014 extensions set,  
3): -10027XK Model include XKSPLE10027 extensions set.



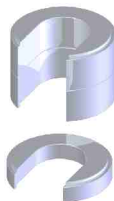
## SPLE/AR 推式架車機

可調整且合人體工學把手  
Portable High Tonnage Jacks

延伸墊塊型號 Extensions Model No.	說明 Description
<b>XKSPL10014-127</b>	組合併，延伸高度 127mm，適用於100噸油缸。 Assembly, Extension 127mm, 100 tons cylinder.
<b>XKSPL10014-279</b>	組合併，延伸高度 279mm，適用於100噸油缸。 Assembly, Extension 279mm, 100 tons cylinder.
<b>XKSPL10014-457</b>	組合併，延伸高度 457mm，適用於100噸油缸。 Assembly, Extension 457mm, 100 tons cylinder.
<b>XKSPL10027-178</b>	組合併，延伸高度 178mm，適用於100噸油缸。 Assembly, Extension 178mm, 100 tons cylinder.
<b>XKSPL10027-229</b>	組合併，延伸高度 229mm，適用於100噸油缸。 Assembly, Extension 229mm, 100 tons cylinder.
<b>XKSPL10027-356</b>	組合併，延伸高度 356mm，適用於100噸油缸。 Assembly, Extension 356mm, 100 tons cylinder.
<b>XKSPL10014</b>	套件，延伸100噸油缸 127, 279, 457mm Set, Extension 100 tons cylinder 127, 279, 457mm.
<b>XKSPL10027</b>	套件，延伸100噸油缸 178, 229, 356mm Set, Extension 100 tons cylinder 178, 229, 356mm.



層疊墊塊型號 Cribbing Blocks Model No.	說明 Description
<b>XKSPL100-25</b>	組合併，層疊高度 25.4mm，適用於100噸油缸。 Assembly, Crib Blocks 25.4mm, 100 tons cylinder.
<b>XKSPL100-76</b>	組合併，層疊高度 76.2mm，適用於100噸油缸。 Assembly, Crib Blocks 76.2mm, 100 tons cylinder.
<b>XKSPL100-127</b>	組合併，層疊高度 127mm，適用於100噸油缸。 Assembly, Crib Blocks 127mm, 100 tons cylinder.
<b>XKSPL100-254</b>	組合併，層疊高度 254mm，適用於100噸油缸。 Assembly, Crib Blocks 254mm, 100 tons cylinder.
<b>XKSPL100</b>	套件，層疊100噸油缸 25.4, 76.2, 229, 356mm Set, Crib Blocks 100 tons cylinder 25.4, 76.2, 127, 254 mm.



墊片型號 Spacers Model No.	說明 Description
<b>XKSSPL100-25</b>	墊片，25.4mm Spacer, 25.4mm
<b>XKSSPL100-50</b>	墊片，50.8mm Spacer, 50.8mm
<b>XKSSPL100-76</b>	墊片，76.2mm Spacer, 76.2mm
<b>XKSSPL100</b>	100噸油缸墊片套件含 25, 50, 76 Spacer Set 100tons cylinder 25, 50, 76

傾斜墊塊型號 Tilt Saddle Model No.	說明 Description
<b>XKCATSPL100-1</b>	100噸油缸傾斜墊塊-短 100 tons cylinder tilt saddle assembly-short
<b>XKCATSPL100-2</b>	100噸油缸傾斜墊塊-長 100 tons cylinder tilt saddle assembly-long



全球服務點  
World Headquarters

## 巨輪興股份有限公司-總公司

**CHU LUN SING CO.,LTD-** Head Office

820115高雄市岡山區岡北路199號  
No.199, Gangshan N. Rd., Gangshan Dist.,  
Kaohsiung City 82059, Taiwan  
TEL:886-7-6210505  
FAX:886-7-6217575  
<https://www.sunrun.com.tw>  
e-mail: sun.run@msa.hinet.net

Singapore

### **Sun Hydraulics Pte Ltd**

2 Yishun Industrial Street 1  
#04-15 North Point Bizhub  
Singapore 768159  
TEL : 65-6 841 7833  
FAX : 65-6 844 2231  
<http://www.sunhydraulics.com.sg>  
e-mail: sales@sunhydraulics.com.sg

Thailand

### **Sun Hydraulics [Thailand] Co., Ltd**

293/14 Soi Ramintra 119 Minburi Bangkok  
10510 Thailand  
TEL : 66-2 540 6631  
FAX : 66-2 540 6632  
[http:// www.sunhydraulics.co.th](http://www.sunhydraulics.co.th)  
e-mail: sales@sunhydraulics.co.th

India

### **V-tech power hydraulics**

# 5, Roshan House, Plot # 18, Sector # 30  
Opp. Sanpada Railway Station, Sanpada ( West ) ,  
Navi Mumbai - 400 705, Maharashtra, India  
TEL : 91 22 27 75 21 80  
FAX : 91 22 27 75 11 81  
[http:// www.vtechhydraulic.com](http://www.vtechhydraulic.com)  
e-mail: sales@vtechhydraulic.com

China-Shanghai

### **Chu Lun Sing Machinery [Shanghai] Co., Ltd**

昆山市花橋鎮花安路169號中寰廣場公寓樓1層5室  
Room5,building 169,HuaAn Road,HuaQiao District KunShan City  
TEL : 86- 21 39217246  
FAX : 86-51 236870145  
Mobil : 86- 18001933799



千斤頂  
CYLINDERS

01-52



泵浦  
PUMPS

53-



油壓配件  
HYDRAULIC ACCESSORIES

69-78



壓床  
PRESSES

83-86



法蘭/螺栓工作件  
FLANGE BOLT

89-124



拉拔器  
PULLERS

125-130



直立式千斤頂  
BOTTLE JACKS

131-136



工具類  
TOOLS

137



# SUN RUN

