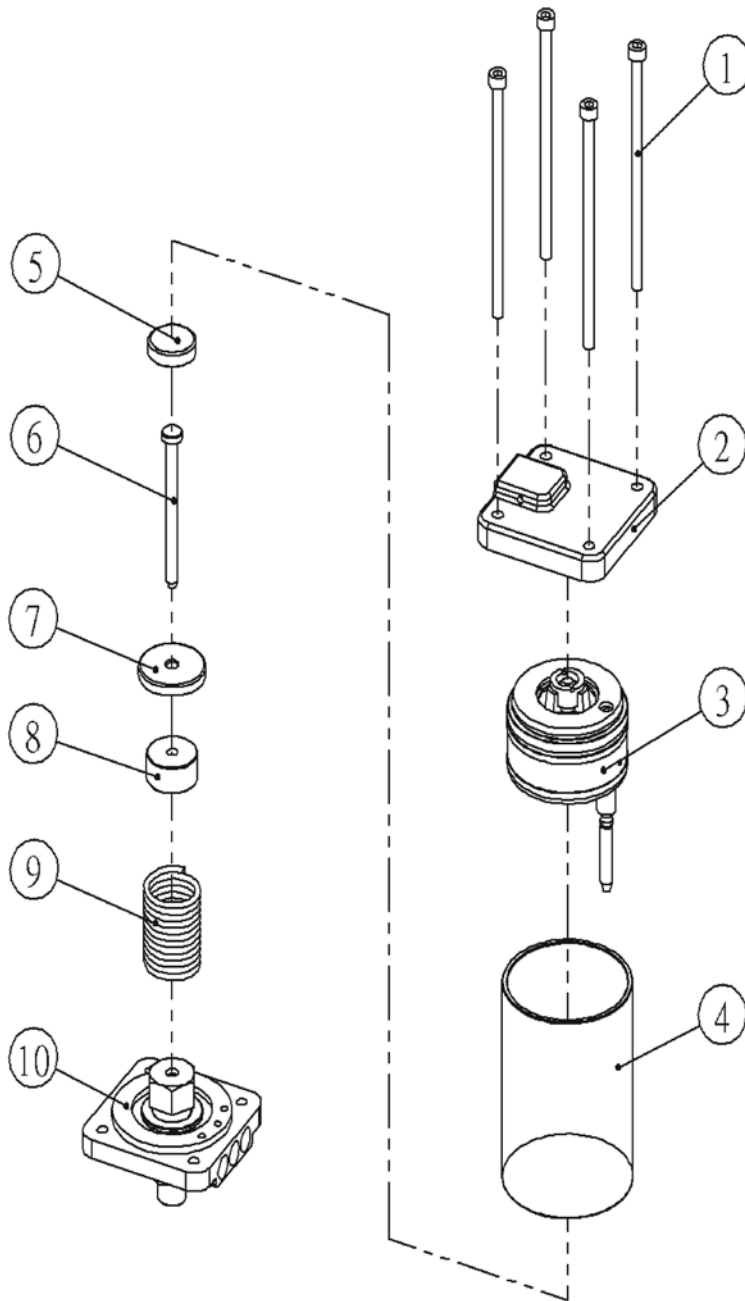


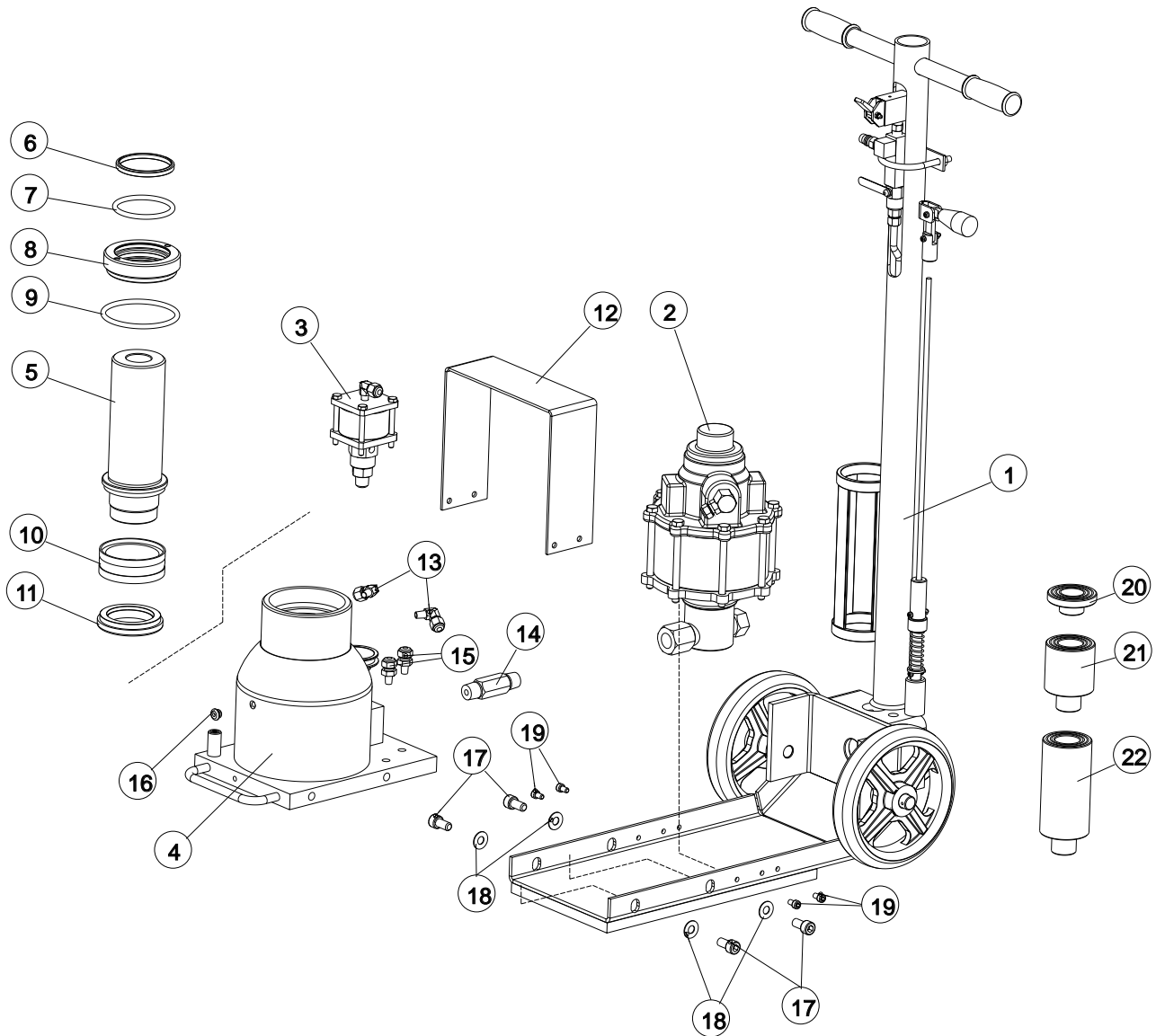
頂次	零件名稱	數量	規格
1	推車組	1	STC-C-30
2	泵浦組	1	STC-A-70A
3	油路塊	1	STC30-D01
* 4	O型環	2	XBP010
5	回油接頭組	2	STC-D-30D1
* 6	螺栓	4	XNCAPM08-75A
7	洩壓閥	1	ST20-B26C
8	洩壓塊板	1	ST30-D15
9	洩壓塊	1	ST30-D02
* 10	螺栓	4	XNCAPM08-35
11	油壓缸焊組	2	STC-B-30B1
* 12	O型環	1	XBAS232
13	上螺帽	1	ST30-B15
* 14	防塵環	1	XDS60
* 15	C型扣環	1	XAS47
16	銼環	1	ST30-B08
* 17	油封	1	XEUPI-50-70-12
18	彈簧	1	XFP28-125
19	主軸	1	ST30-B08
* 20	O型環	1	XBP008
* 21	背托環	1	XGP008
* 22	螺栓	1	XNCAPM08-40
* 23	平華司	4	XW-M10
* 24	螺栓	4	XNCAPM10-20
25	覆蓋	1	CAR-C21C
* 26	螺栓	4	XNCAPM06-8
27	墊塊(薄)	1	XK60-010
28	墊塊(中)	1	XK60-045
29	墊塊(長)	1	XK60-080

\* 代表為修理包

## SPA-70 泵浦零件圖 (STC-30L及STC-50DL適用)



項次	名稱	數量
1	螺栓	4
2	上蓋組	1
3	活塞組	1
4	汽缸	1
5	墊塊	1
6	油泵軸	1
7	華司	1
8	軸套	1
9	彈簧	1
10	油泵組	1



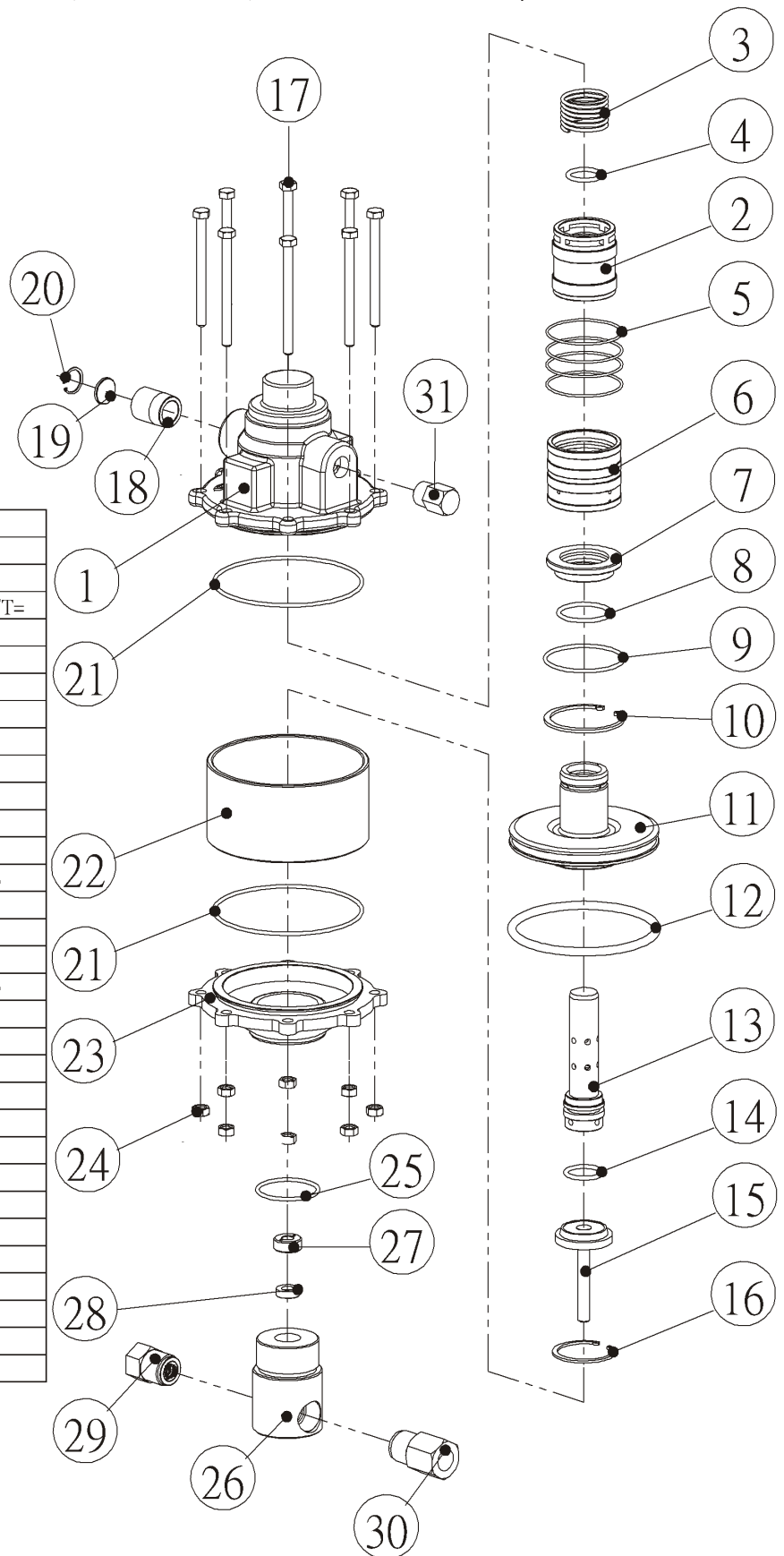
頂次	零件名稱	數量	規格	規格	規格	規格
1	推車組	1	STC-C-50	STC-C-50L	STC-C-50L2	STC-C-50L3
2	氣動泵浦組	1	STC-A-130B	STC-A-130B	STC-A-130B	STC-A-130B
3	油路塊	1	STC-D-50	STC-D-50	STC-D-50	STC-D-50
4	油壓缸組	1	STC-B-50B1	STC-B-50B1	STC-B-50B1	STC-B-50B1
5	主軸	1	STC50-B04B	STC50-B04B	STC50-B04B	STC50-B04B
* 6	防塵環	1	XDDSI065	XDDSI065	XDDSI065	XDDSI065
* 7	O型環	1	XBP065	XBP065	XBP065	XBP065
8	上螺帽	1	STC50-B05B	STC50-B05B	STC50-B05B	STC50-B05B
* 9	O型環	1	XBP085	XBP085	XBP085	XBP085
* 10	耐磨環	1	XEDC80	XEDC80	XEDC80	XEDC80
11	銼環	1	ST50-B06B	ST50-B06B	ST50-B06B	ST50-B06B
12	覆蓋	1	CAR-C22A	CAR-C22A	CAR-C22A	CAR-C22A
13	接頭	2	XIA032-1	XIA032-1	XIA032-1	XIA032-1
14	加長接頭	1	ST50-B10B	ST50-B10B	ST50-B10B	ST50-B10B
15	接頭	2	XIS52	XIS52	XIS52	XIS52
* 16	加油塞子	1	XNHCM10-16-P07	XNHCM10-16-P07	XNHCM10-16-P07	XNHCM10-16-P07
17	螺栓	4	XNCAPM10-20	XNCAPM10-20	XNCAPM10-20	XNCAPM10-20
* 18	墊片	4	XW-3/8	XW-3/8	XW-3/8	XW-3/8
19	螺栓	4	XNCAPM06-08	XNCAPM06-08	XNCAPM06-08	XNCAPM06-08
20	墊塊(薄)	1	XK60-010	XK60-010	XK60-010	XK60-010
21	墊塊(中)	1	XK60-060	XK60-060	XK60-060	XK60-060
22	墊塊(長)	1	XK60-120	XK60-120	XK60-120	XK60-120

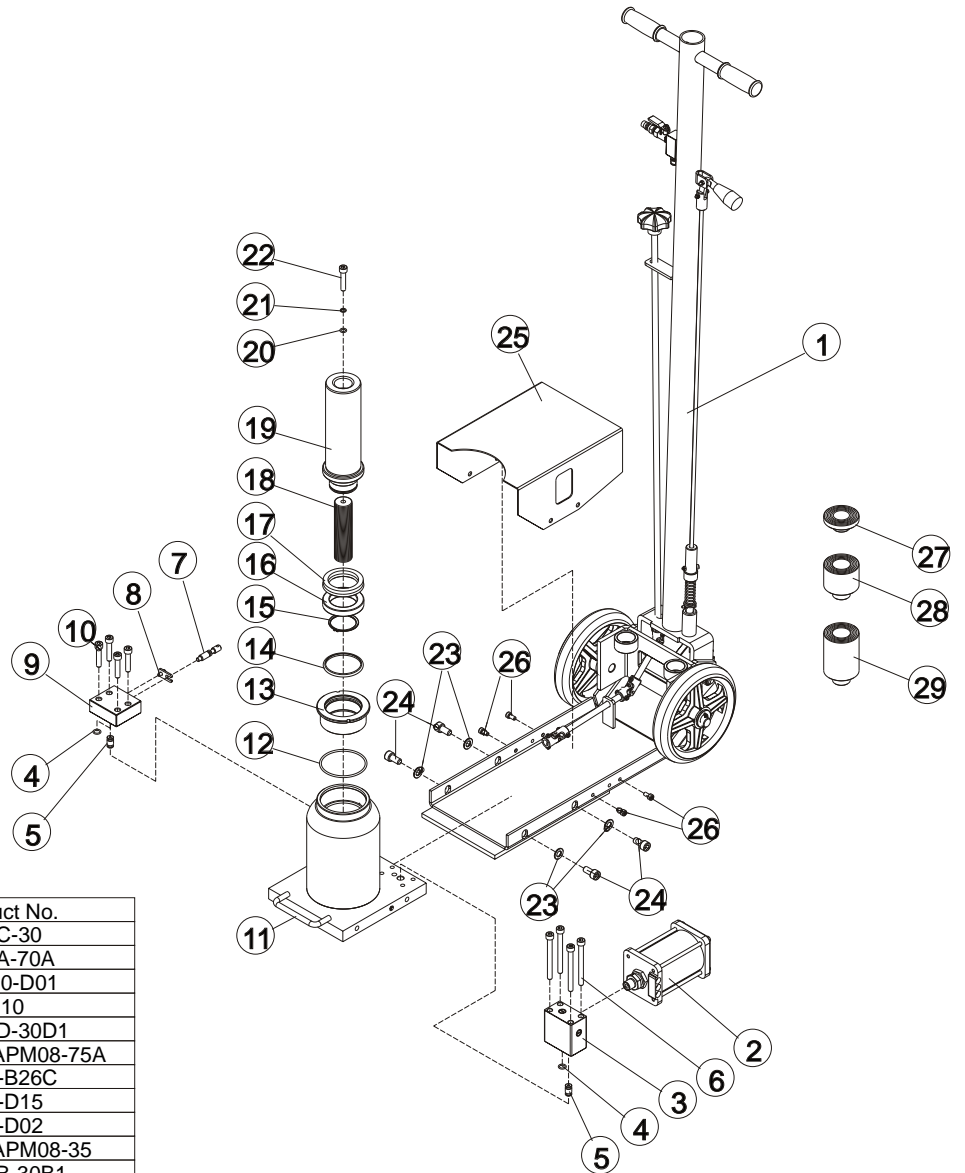
\* 代表為修理包

## SPA-130 泵浦零件圖 (STC-50,STC-50L,STC-50L2,STC-50L3L適用)

項次	零件名稱	數量	備註
1	泵浦上蓋	1	SPA130-A01
2	鋁活塞	1	SPA130-A03
3	彈簧	1	XF3-D41-55L-7T=
*	O型環	1	XBP025.5
*	O型環	4	XBS063
6	鋁襯	1	SPA130-A02
7	鋁蓋	1	SPA130-A04
*	O型環	1	XBP041
*	O型環	1	XBG065
10	C型扣環	1	XAR65
11	鋁大活塞	1	SPA130-A05
*	O型環	1	XBAS426
13	長心活塞組	1	STC-A-130BA3
*	O型環	1	XBP028
15	油泵軸	1	SPA130-A12B
16	C型扣環	1	XAR50
17	螺栓	8	XNHCM08-100
18	消音器	1	SPA130-A15
19	消音片	1	XL23.3-3
20	C型扣環	1	XAR24
*	O型環	2	XBG125
22	鋁汽缸	1	SPA130-A06
23	泵浦下蓋	1	SPA130-A14
24	螺帽	8	XOM08
*	O型環	1	XBG050
26	油泵座	1	SPA130-A39B
27	油泵螺帽	1	SPA130-A18B
*	油封	1	XEIDI010
29	入口螺栓組	1	SPA-IN-B
30	出口螺栓組	1	SPA-OUT-A
31	入風螺栓	1	SPA130-A16

\* 代表修理包

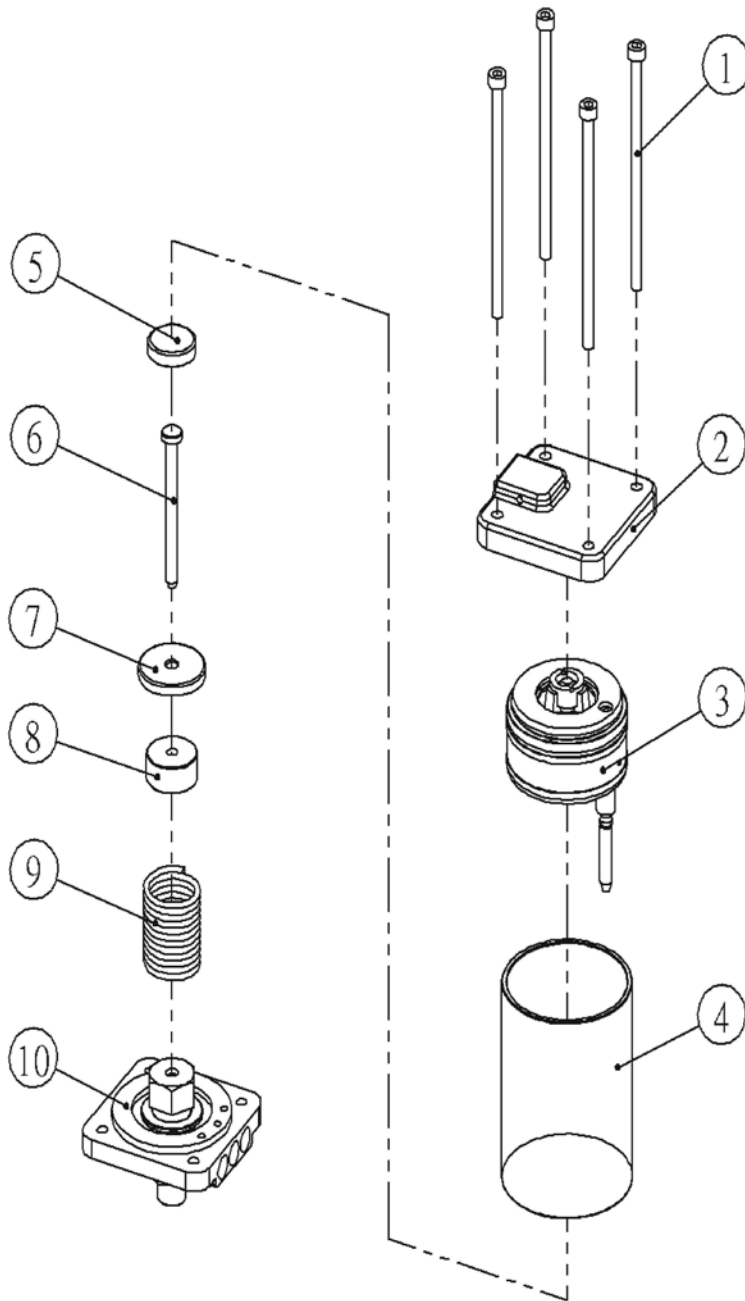




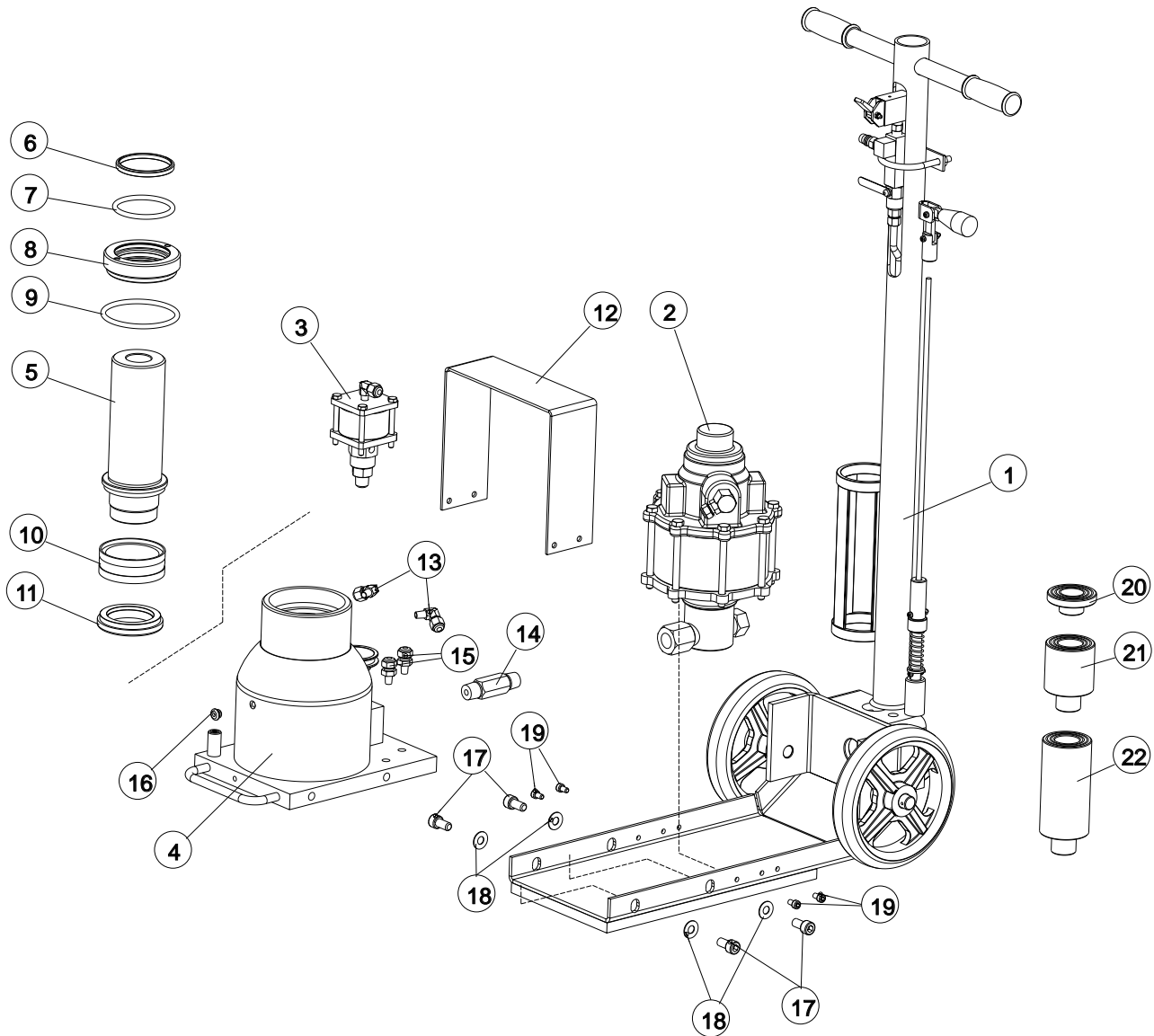
Item	Product	Q'ty	Product No.
1	wagon set	1	STC-C-30
2	pump	1	STC-A-70A
3	oil path block	1	STC30-D01
* 4	O-ring	2	XBPO10
5	oil return connect	2	STC-D-30D1
* 6	bolt	4	XNCAPM08-75A
7	pressure relief valve	1	ST20-B26C
8	plate	1	ST30-D15
9	pressure relief block	1	ST30-D02
* 10	bolt	4	XNCAPM08-35
11	cylinder	2	STC-B-30B1
* 12	O-ring	1	XBAS232
13	stop ring	1	ST30-B15
* 14	wipers	1	XDS60
* 15	C type ring	1	XAS47
16	metal ring	1	ST30-B08
* 17	seal	1	XEUPI-50-70-12
18	spring	1	XFP28-125
19	plunger	1	ST30-B08
* 20	O-ring	1	XBPO08
* 21	back-up ring	1	XGP008
* 22	bolt	1	XNCAPM08-40
* 23	spacer	4	XW-M10
* 24	bolt	4	XNCAPM10-20
25	cover	1	CAR-C21C
* 26	bolt	4	XNCAPM06-8
27	saddle-thin	1	XK60-010
28	saddle-mid	1	XK60-045
29	saddle-long	1	XK60-080

\* Repair Kit

## SPA-70 Pump part (Just use in STC-30L & STC-50DL)



Item	Product	Q'ty
1	bolt	4
2	up cap	1
3	piston	1
4	cylinder	1
5	base	1
6	plunger	1
7	washer	1
8	block	1
9	spring	1
10	base	1



			STC-50	STC-50L	STC-50L2	STC-50L3
Item	Product	Q'ty	Part No.	Part No.	Part No.	Part No.
1	Wagon Set	1	STC-C-50	STC-C-50L	STC-C-50L2	STC-C-50L3
2	Pump	1	STC-A-130B	STC-A-130B	STC-A-130B	STC-A-130B
3	Oil Path	1	STC-D-50	STC-D-50	STC-D-50	STC-D-50
4	Cyl. Assembly	1	STC-B-50B1	STC-B-50B1	STC-B-50B1	STC-B-50B1
5	Plunger	1	STC50-B04B	STC50-B04B	STC50-B04B	STC50-B04B
* 6	Wipers	1	XDDSI065	XDDSI065	XDDSI065	XDDSI065
* 7	O-ring	1	XBP065	XBP065	XBP065	XBP065
8	Stop Ring	1	STC50-B05B	STC50-B05B	STC50-B05B	STC50-B05B
* 9	O-ring	1	XBP085	XBP085	XBP085	XBP085
* 10	Wear Ring	1	XEDC80	XEDC80	XEDC80	XEDC80
11	Metal Ring	1	ST50-B06B	ST50-B06B	ST50-B06B	ST50-B06B
12	Cover	1	CAR-C22A	CAR-C22A	CAR-C22A	CAR-C22A
13	Couplers	2	XIA032-1	XIA032-1	XIA032-1	XIA032-1
14	Couplers	1	ST50-B10B	ST50-B10B	ST50-B10B	ST50-B10B
15	Couplers	2	XIS52	XIS52	XIS52	XIS52
* 16	Oil Bung	1	XNHCM10-16-P07	XNHCM10-16-P07	XNHCM10-16-P07	XNHCM10-16-P07
17	Bolt	4	XNCAPM10-20	XNCAPM10-20	XNCAPM10-20	XNCAPM10-20
* 18	Spacer	4	XW-3/8	XW-3/8	XW-3/8	XW-3/8
19	Bolt	4	XNCAPM06-08	XNCAPM06-08	XNCAPM06-08	XNCAPM06-08
20	Saddle-thin	1	XK60-010	XK60-010	XK60-010	XK60-010
21	Saddle-mid	1	XK60-060	XK60-060	XK60-060	XK60-060
22	Saddle-long	1	XK60-120	XK60-120	XK60-120	XK60-120

\* repair kit

# SPA-130 Pump part

(Just use in STC-50,STC-50L,STC-50L2,STC-50L3L)

Item	Description	Q'ty	Part No.
1	up cap	1	SPA130-A01
2	aluminum piston	1	SPA130-A03
3	Spring	1	XF3-D41-55L-7T=
4	O ring	1	XBP025.5
5	O ring	4	XBS063
6	aluminum bush	1	SPA130-A02
7	aluminum cap	1	SPA130-A04
8	O ring	1	XBP041
9	O ring	1	XBG065
10	C type ring	1	XAR65
11	big aluminum piston	1	SPA130-A05
12	O ring	1	XBAS426
13	long piston	1	STC-A-130BA3
14	O ring	1	XBP028
15	rod	1	SPA130-A12B
16	C type ring	1	XAR50
17	bolt	8	XNHCM08-100
18	silencer	1	SPA130-A15
19	silencer piece	1	XL23.3-3
20	C type ring	1	XAR24
21	O ring	2	XBG125
22	aluminum barrel	1	SPA130-A06
23	below cap	1	SPA130-A14
24	nut	8	XOM08
25	O ring	1	XBG050
26	pump seat	1	SPA130-A39A
27	nut	1	SPA130-A18A
28	seal	1	XEIDI011.2
29	input bolt assembly	1	SPA-IN-A
30	output bolt assembly	1	SPA-OUT-A
31	air input bolt	1	SPA130-A16

